



ماده امتحانی	تعداد سؤال	از شماره	تا شماره
شنیداری	۱۵	۱	۱۵
گرامر	۲۰	۱۶	۳۵
واژگان	۱۰	۳۶	۴۵
درک مطلب	۲۵	۴۶	۷۰
نوشتاری	یک موضوع از دو موضوع داده شده	بخش E	

نام و نام خانوادگی:

شماره دانشجویی:

رشته/گرایش تحصیلی:

دانشگاه/دانشکده:

۹۶

دوره آزمون:



تعداد سؤالات: ۷۰ سؤال چهارگزینه‌ای + ۱ سؤال نوشتاری



تعداد صفحات سوال: ۱۲ صفحه



زمان پاسخگویی: ۱۱۰ دقیقه



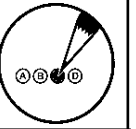
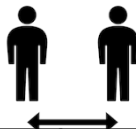
تاریخ برگزاری: ۱۴۰۳/۰۲/۲۷



محل برگزاری: اصفهان، میدان آزادی، دانشگاه اصفهان، سه راه زبان،



ساختمان شهید بهشتی



راهکار قبولی تضمینی در آزمون با فست زبان

منبع تضمینی برای بخش گرامر

کتاب فست گرامر جامع ترین و کم حجم ترین منبع فارسی آموزش گرامر زبان انگلیسی ویژه آزمون های زبان دکتری است. **برای دانلود یک فصل رایگان از فست گرامر کلیک کنید.**

منبع تضمینی برای بخش واژگان

کتاب فست وکب مجموعه ای شگفت انگیز از چندین کتاب مرجع یادگیری لغت است که در مجموع شامل ۲۲۰۰ لغت بسیار مهم انگلیسی است که تطابق بیش از ۹۰ درصدی با تمام آزمون های داخلی و حتی آیلتس و تافل را دارد. **دانلود نمونه کتاب**

منبع تضمینی بخش درک مطلب

برای بخش ریدینگ آزمون نیز می توانید از کتاب بسیار کم حجم فست ریدینگ استفاده نمایید. این کتاب مهارت های لازم برای کسب بهترین نتیجه از سوالات درک مطلب را در تنها ۷۰ صفحه و آن هم به زبان فارسی آموزش می دهد. **دانلود نمونه کتاب**

Part A: Listening



Listen and mark your answers to questions 1-15 in the answer sheet. The audio will be played only once.

به فایل صوتی با دقت گوش دهید و پاسخ سؤالات 1 تا 15 را در پاسخنامه علامت بزنید. فایل صوتی تنها یک بار پخش خواهد شد.



Section A: Questions 1-10

Short Conversations

1) What does the man mean?

- A) The woman did not need to call him.
- B) The woman called to let him know about the meeting.
- C) He's not glad that the woman called.
- D) He already knew about the meeting when the woman called.

2) What does the woman mean?

- A) The man often drives too quickly.
- B) The police do not stop the man too much.
- C) The man drove rather slowly.
- D) The police should not stop the man so often.

3) What does the woman mean?

- A) She's so happy they don't have to work on Friday.
- B) It would be nice if they could finish their work on Friday.
- C) She wonders if the man would be nice enough to come in to work in her place on Friday.
- D) It's too bad they must work on Friday.

4) What does the man mean?

- A) She did not put enough postage on the letter.
- B) The letter arrived last week.
- C) The letter did not need more postage.
- D) She did not put any postage on the letter.

5) What does the man mean?

- A) He has a dog.
- B) He doesn't pay attention to dogs.
- C) He wishes he had a dog.
- D) Dogs do not need much attention.

6) What does the woman say about the other students?

- A) They knew they had to prepare for the exam.
- B) They didn't prepare for the exam.
- C) As soon as they knew about the exam, they began to prepare for it.
- D) They knew that the preparation for the exam would take a lot of time.

7) What does the man mean?

- A) It costs too much for him to go.
- B) He agrees to go with them.
- C) He is unworried about the cost of the restaurant.
- D) The restaurant is rather inexpensive.

8) What does the man mean?

- A) When Joe saw the car coming, he tried to get out of the way.
- B) Joe was able to get out of the way because he saw the car coming.
- C) Joe jumped out of the way of the oncoming car.
- D) Because Joe didn't see the car coming, he couldn't get out of the way.

9) What did the man assume?

- A) The woman didn't come. C) The woman was going to leave immediately
B) The woman wanted to be there. D) The woman was not really there.

10) What does the woman mean?

- A) Kathy didn't work as hard as possible because she didn't know what the reward was.
B) Kathy couldn't have put more effort into the project to win the prize.
C) Kathy won first prize because of her hard work on the art project.
D) Kathy worked so hard that she knew first prize was hers.

Section B: Questions 11-15

Lecture

11) When did the first official Olympic Games take place?

- A) In 393 AD B) In 776 BC C) In 1896 AD D) In 1393 AD

12) How many events did the Pentathlon include?

- A) three B) five C) seven D) nine

13) Who was not allowed to compete in the ancient Olympic Games?

- A) Chariot racers B) Greek-born men C) Women D) Pentathletes

14) What is the IOC?

- A) International Olympic Committee C) International Olympic City
B) International Official City D) International Olympic Council

15) What is the purpose of the Olympic Games?

- A) To oversee athletes from various countries C) To promote friendship among the nations
B) To make money on a national level D) To represent host countries

Part B: Grammar



Section 1. Read each test item carefully and answer the questions by choosing the answer (a), (b), (c) or (d). Then mark the correct choice on your answer sheet.

تشخیص گزینه صحیح

16) Strauss finished ... two of his published compositions before his tenth birthday.

- A) written B) write C) to write D) writing

17) Although the name was not popularized until the Middle ages, engineering ... civilization.

- A) as old as B) is as old as C) that is old as D) as old as that

18) It is now believed that some damage to tissues may result ... them to frequent X-rays.

- A) the exposing B) from exposure C) from exposing D) expose

19) I should say that I haven't seen ... man than Peter in my whole life so far.

- A) as generous as a C) a more generous
B) the most generous D) the most generous of

20) ... planet from the Sun, Mars has a year of 687 days.

- A) Four B) The four C) Fourth D) The fourth

21) Although “speed” and “velocity” are sometimes used interchangeably, in a technical sense, “speed” is not always ... “velocity”.

- A) alike B) the same as C) similar D) as

22) Besides rain, ... is seldom pure.

- A) water naturally B) natural water C) water of nature D) the nature’s water

23) I don’t have any plan for New Year holiday. I ... here.

- A) am going to stay B) have been C) had been D) have been staying

24) Botanists are not sure where the first plant was grown or even

- A) what plant was C) what plant was it
B) it was what plant D) what plant it was

25) There are three kinds of solar eclipses: one is total, another is annular, and ...

- A) the another is partial C) the partial is other
B) other is partial D) the other is partial



Section 2. Choose the underlined words or phrases that need to be corrected. Mark the answers on your answer sheet.

تشخیص گزینه غلط

26) John is a better swimmer to Allen, but he is not so skillful a driver.

- A B C D

27) The MX is a four-stages rocket with an 8000-mile range, larger than that of the Minuteman.

- A B C D

28) Mercury is not often visible because it is so near the sun to be seen.

- A B C D

29) Despite of the fact that backgammon is easy to learn, it is as difficult to play as chess.

- A B C D

30) It usually takes much less time to fly from one country to another than travelling by train.

- D

31) The hotel clerk told us tourists that there has always been more people travelling abroad in the summer.

- D

32) Seen in the pale moonlight. The old house certainly looked differently to us.

- A B C D

33) The financial officer is conduct a study to find new ways to reduce costs.

- A B C D

34) The work which the poet Emma Lazarous is best known is “The New Colossus,”

- A B

which is inscribed on the pedestal of the Statue of Liberty.
C D

- 35) The importance of environmental stimuli in the development of co-ordination between
A B
sensory input and motor response varies to species to species.
C D

Part C: Vocabulary



Read each test item carefully and answer the questions by choosing the answer (a), (b), (c) or (d). Then mark the correct choice on your answer sheet.

Vocabulary Part 1: Gap-Filling

- 36) His little brother was sick. Doctors kept him ... on a life-support machine.
A) live B) alive C) dead D) support
- 37) It was difficult for my father to ... the money equally among the family members.
A) increase B) receive C) divide D) borrow
- 38) My mother shouted: "..."; but it was too late – my sister knocked the whole tray of drinks on the floor.
A) Look up B) Watch out C) Take action D) Hang out
- 39) I ... what I would be doing now in this strange country without your kind help
A) suppose B) wonder C) prefer D) hate
- 40) The Drugs Unit plans to ... students' knowledge of drugs.
A) select B) expand C) donate D) respect

Vocabulary Part 2: Synonym

- 41) The illustration has been copied with the permission of the publisher.
A) represented B) reproduced C) repaired D) reduced
- 42) The strict storm damaged the little ship.
A) serene B) severe C) serving D) stubborn
- 43) After much surveillance, the police managed to arrest the thief.
A) imprisonment B) close watch C) appraisal D) legal search
- 44) There is a tendency in all human beings towards justice.
A) inclination B) hatred C) sorrow D) memory
- 45) After a trial lasting five months, the defendant was exonerated of all charges.
A) convicted B) told C) imprisoned D) freed

Part D: Reading Comprehension

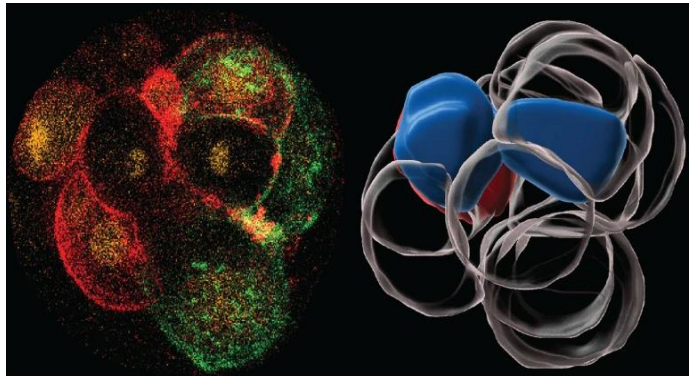


Read the texts carefully and choose the best answer to the questions that follow.



Reading 1

The two cells that make up a one-day-old human embryo might look identical at first glance. But a study published today shows that most of the human body forms from only one of those cells — a finding that could help to increase the success rate of *in vitro* fertilization (IVF) procedures. The work shows that the very first division of a fertilized egg primes the resulting cells to seek different fates, paving the way for the intricacies of the fully developed fetus.



“This is a major step forward,” says developmental biologist Ali Brivanlou at the Rockefeller University in New York City, adding that the clinical implications will become clearer as research progresses. “It warms my heart to see we’re now getting to a point where we can ask about human-specific traits in our own development instead of generalizing from model organisms.” The finding was published in *Cell*.

Researchers have long thought that all the cells in mammalian zygotes — fertilized eggs and embryos with fewer than 16 cells — are identical and don’t begin to specialize until later in development. After all, zygotes that split into two separate embryos after several cell divisions have already occurred can still turn into identical twins.

But in 2001, developmental biologist Magdalena Zernicka-Goetz, now at the California Institute for Technology in Pasadena, co-authored a paper revealing that the first two cells in a mouse embryo are distinct. One of the two cells divides into progeny cells that go mainly to make up the majority of the mouse fetus, whereas the other cell’s **descendants** primarily form the yolk sac. Zernicka-Goetz has long wanted to know whether the same was true in humans.

“My dream was to understand how cells specify their fate and how the complexity of life starts to evolve,” she says. But that has proved difficult to study: embryos donated from IVF clinics typically contain dozens of cells. Zernicka-Goetz found an IVF clinic that could provide her lab with 54 fertilized eggs that had not yet

fully completed their first division, which yields two cells called blastomeres. The researchers allowed the fertilized eggs to divide in the lab and labelled one of the resulting blastomeres with a



Scan to read the full text!



fluorescent protein. **This** allowed them to track each blastomere's **descendants** as the embryo developed.

✓ متن فوق از جدیدترین مقالات منتشر شده در نشریه معتبر نیچر است.

✓ این مقاله در تاریخ 13 مه ۲۰۲۴ منتشر شده است. آزمون حاضر در تاریخ 16 مه ۲۰۲۴ برگزار می‌شود.

✓ لینک دسترسی به مقاله: <https://www.nature.com/articles/d41586-024-01403-y>

46) What is the main focus of the text?

- A) The global impact of microplastics pollution
- B) The health risks associated with nanoplastics ingestion
- C) The use of IVF techniques to study early human embryo development
- D) The environmental effects of plastics in oceans

47) What is the key finding of the study reported in the text?

- A) Most of the human body forms from only one of the two cells in a one-day-old human embryo.
- B) The first division of a fertilized egg primes the resulting cells to seek different fates.
- C) Zygotes that split into two separate embryos can turn into identical twins.
- D) All the cells in mammalian zygotes are identical and don't begin to specialize until later in development.

48) How does the text describe the implications of the study's findings for IVF procedures? The findings

- A) are not expected to have any significant impact on IVF success rates.
- B) could help to increase the success rate of IVF procedures.
- C) suggest that IVF procedures need to be more closely monitored.
- D) indicate that IVF procedures are fundamentally flawed and should be reconsidered.

49) What was the primary motivation behind Magdalena Zernicka-Goetz's long-standing interest in studying the early stages of human embryo development?

- A) To understand how cells specify their fate and how the complexity of life starts to evolve.
- B) To develop new techniques for improving the success rate of IVF procedures.
- C) To compare the early development of human embryos to that of model organisms like mice.
- D) To challenge the prevailing assumptions about the uniformity of cells in mammalian zygotes.

50) What does the text suggest about the relationship between the findings of the current study and the previous research on cell differentiation in mouse embryos?

- A) The current findings directly contradict the earlier research on mouse embryos.
- B) The current findings confirm and extend the earlier research on mouse embryos.
- C) The current findings are entirely unrelated to the earlier research on mouse embryos.
- D) The current findings call into question the relevance of research on model organisms like mice.

51) What does the text imply about the challenges the researchers faced in studying the early stages of human embryo development prior to this study? The researchers

- A) lacked access to suitable human embryo samples.
- B) were unable to use the same techniques employed in studies of model organisms.
- C) did not have the necessary funding and resources to conduct such studies.
- D) were constrained by ethical concerns around the use of human embryos for research

52) What does the word "descendants" refer to in the context of the text?

- A) Offspring
- B) Ancestral lineage
- C) Cells in the yolk sac
- D) Cells in the fetus

53) What does the pronoun “this” refer to in the last paragraph of the text?

- A) The division of the fertilized eggs in the lab
- B) The process of the embryo's development
- C) The finding that the first two cells in a mouse embryo are distinct
- D) The labeling of one of the resulting blastomeres with a fluorescent protein



Reading 2



Not long after the news first broke that Kylian Mbappe had confirmed his intention to leave Paris Saint-Germain at the end of the season, Aurelien Tchouameni dropped a social media post featuring nothing but a couple of popcorn emojis. No words were

necessary.

The message was as clear as it was concise: Tchouameni can't wait to see what happens next in the football world's longest-running soap opera. The midfielder's excitement is perfectly understandable, of course. Mbappe will soon be joining him at Real Madrid.

It's long been the worst-kept secret in football, of course, inevitable for about six months at this stage, and arguably probable ever since Mbappe first burst onto the scene as a teenager at Monaco. Because the Frenchman has wanted to move to Madrid since he was a kid. His upcoming free transfer is, thus, the realisation of a dream. For PSG, though, it's the end of a nightmare.

The French champions may actually end up getting some sort of financial compensation - Mbappe may give up certain bonuses owed to him or even hand over his signing-on fee to PSG - but the club is set to pay an incredibly heavy price for losing the best player in the world in terms of sponsorship deals, commercial opportunities and social media followers.

Even when both Neymar and Lionel Messi were on the books, Mbappe was still PSG's most valuable player in every sense. He wasn't just one of the game's great talents, he was a homegrown hero. In their ideal world, the boy from Bondy would have led PSG to a first Champions League title. But this Parisian fairy tale has long since descended into farce.

Madrid's interest in Mbappe - and vice versa - has been long standing. Los Blancos first invited the kid with the posters of Cristiano Ronaldo and Zinedine Zidane on his bedroom wall to the club's training ground in 2012. Madrid also agreed a deal with Monaco to sign Mbappe in the summer of 2017, only for the teenage sensation to surprisingly plump for PSG instead.

Scan to read the full text!





54) How does the text describe Aurelien Tchouameni's reaction to the news of Mbappe's intended transfer? Tchouameni is

- A) indifferent and uninterested in the situation.
- B) frustrated and critical of Mbappe's decision to leave PSG.
- C) excited and anticipates the opportunity to play with Mbappe at Real Madrid.
- D) amused and eager to see how the situation will unfold.

55) What does the text suggest about the timeline of Mbappe's desire to join Real Madrid? Mbappe's desire to join Real Madrid has been

- A) a secret for the past six months.
- B) an inevitability for about six months.
- C) a probability since his early days at Monaco.
- D) a lifelong dream since he was a child.

56) How does the text describe the potential impact of Mbappe's departure on Paris Saint-Germain? PSG

- A) may receive significant financial compensation, mitigating the loss.
- B) will struggle to find a suitable replacement for Mbappe's on-field contributions.
- C) will face a major setback in their pursuit of a first Champions League title.
- D) will suffer significant losses in terms of sponsorship, commercial opportunities, and social media presence.

57) What is the meaning of the word "soap opera" as used in paragraph 2 of the text?

....

- A) A melodramatic television series
- B) A dramatic and sensationalized news story
- C) A long-running and complex news cycle
- D) A theatrical and exaggerated real-life event

58) What is the text's portrayal of Mbappe's importance and status within Paris Saint-Germain? Mbappe was

- A) overshadowed by the presence of Neymar and Lionel Messi.
- B) considered the most valuable player at PSG, even with the other superstars.
- C) viewed as a talented but inconsistent player at PSG.
- D) seen as a homegrown hero who could lead PSG to their first Champions League title.

59) Who does the pronoun "him" refer to in line 11 of the text?

- A) Kylian Mbappe
- B) A player already at Real Madrid
- C) Aurelien Tchouameni
- D) The Real Madrid manager

60) How does the text characterize Mbappe's decision to join PSG over Real Madrid in 2017?

- A) Mbappe's decision to join PSG was influenced by factors other than his childhood dream.
- B) Mbappe's decision to join PSG was a miscalculation that he is now correcting.
- C) Mbappe's decision to join PSG was the beginning of the end of the "Parisian fairy tale".
- D) Mbappe surprised everyone by choosing PSG over the expected move to Real Madrid.

61) What does the text imply about the relationship between Mbappe's departure and the "Parisian fairy tale" at PSG?

- A) Mbappe's departure was an inevitable part of the "Parisian fairy tale" unraveling.
- B) The "Parisian fairy tale" was a myth that never had a chance of being realized.
- C) Mbappe's departure is the final nail in the coffin for the "Parisian fairy tale".
- D) The "Parisian fairy tale" was always destined to end in disappointment.

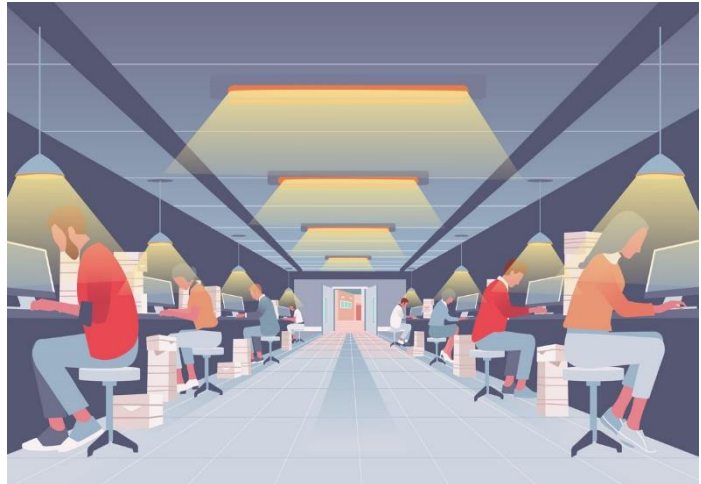
62) What is the meaning of the word "plump" as used in the last paragraph of the text?

- A) To choose or select
- B) To become full or rounded
- C) To express disapproval
- D) To suddenly increase in size



Reading 3

When COVID-19 hit, many behavioral scientists had a way to keep their research running: Move it online. The pandemic boosted an already growing trend of studies conducted via online platforms, among the most popular of which is Amazon's Mechanical Turk (MTurk). The service charges "requesters" a commission to



crowdsource tasks—such as completing a survey or solving a puzzle—to remote workers paid for each one. Web of Science data show publications mentioning MTurk as a keyword went from 34 in 2010 to a peak of 989 in 2021. But as MTurk's popularity surged, so, too, did the number of researchers sounding the alarm about problems with data it generates. Now, a new study reports 96% of the data collected in a mock survey on MTurk made no sense, with participants agreeing equally with contradictory statements such as "I like order" and "I crave chaos."

The unreviewed study, posted to the preprint server PsyArXiv last month, is a "clear, easy demonstration" of well-known problems with MTurk, says Michael Chmielewski, a personality psychologist at Southern Methodist University who was not involved with the paper. Although researchers have been calling attention to these problems for years, Chmielewski says in his work as a journal editor and reviewer he still encounters many papers that use MTurk without adequately guarding against low-quality data. The study should "hopefully move the needle a little bit" on helping more researchers realize that high-quality online studies are a lot more complex than simply posting a survey on MTurk, adds Dave Hauser, a personality and social psychologist at Queen's University.

Launched in 2005, MTurk started out as a reasonably reliable source of research data. It and other platforms offer an “incredible opportunity,” says University College London cognitive psychologist Jennifer Rodd. They allow for studies with larger samples of participants and more diversity than the “tiny sliver of humanity” a researcher can access directly. But Chmielewski says he and other researchers began to grumble about a perceived decline in data quality around 2018.

Scan to read the full text!



✓ متن فوق از جدیدترین مقالات منتشر شده در نشریه معتبر ساینس است.
✓ این مقاله در تاریخ 9 مه ۲۰۲۴ منتشر شده است. آزمون حاضر در تاریخ 16 مه ۲۰۲۴ برگزار می‌شود.

✓ لینک دسترسی به مقاله: <https://www.science.org/content/article/psychology-study-participants-recruited-online-may-provide-nonsensical-answers>



63) What is the primary reason behind the surge in the use of online platforms like MTurk for behavioral research during the COVID-19 pandemic, as implied in the text?

- A) The need to maintain research continuity despite in-person restrictions
- B) The opportunity to access a more diverse participant pool remotely
- C) The significant cost savings associated with online data collection
- D) The increased availability of remote work opportunities for participants

64) What does the text suggest about the general trend in publications mentioning MTurk as a keyword over time?

- A) It has remained relatively stable since 2010.
- B) It increased significantly from 2010 to 2021.
- C) It decreased sharply from 2010 to 2021.
- D) It fluctuated significantly with no clear overall trend.

65) What is the primary implication of the finding from the unreviewed study reported in the text?

- A) Participants on MTurk are unable to provide coherent and meaningful responses.
- B) Researchers have been overly critical of the data quality on MTurk for years.
- C) The use of MTurk for behavioral research is fundamentally flawed and unreliable.
- D) More rigorous methodological approaches are needed for high-quality online studies

66) What is the primary message conveyed in the text about the use of MTurk for behavioral research?

- A) MTurk is an increasingly reliable and valuable tool for researchers.
- B) Researchers should be cautious and take adequate precautions when using MTurk.
- C) The problems with MTurk data quality are overblown and can be easily addressed.
- D) The use of MTurk has revolutionized the field of behavioral research.

67) What does the text suggest about the perceived trend in data quality on MTurk over time? The data quality

- A) has remained consistently high since the platform's launch.
- B) has steadily declined since the platform's launch in 2005.
- C) was initially high but has been perceived to decline around 2018.
- D) has fluctuated significantly, with no clear overall trend.

68) What is the primary criticism of the use of MTurk for behavioral research, as implied in the text?

- A) The platform's commission fees are too high for most researchers.
- B) The participant pool on MTurk is not representative of the general population.
- C) The data generated on MTurk is often of low quality and unreliable.
- D) The use of MTurk has led to a decline in the overall quality of behavioral research.

69) What does the text suggest about the complexity of conducting high-quality online studies compared to simply posting a survey on MTurk? Online studies

- A) require more advanced technological skills and resources.
- B) are more prone to issues with data quality and participant engagement.
- C) are more time-consuming and labor-intensive to set up and manage.
- D) are more complex and require more rigorous methodological approaches.

70) What does the text imply about the broader context of the increasing use of online platforms like MTurk for behavioral research? It is

- A) a relatively new trend that emerged during the COVID-19 pandemic.
- B) part of a growing and established practice in the field of behavioral research.
- C) a controversial topic that has divided the research community.
- D) a cost-effective solution that has significantly improved research efficiency.



Part E: Writing

Choose one of the following topics and write an essay about it. Write for at least 150 words in no more than 20 minutes.

A) People living in the 21st century have a better life quality than people who lived in previous times. To what extent do you agree with this view? Give reasons for your answer and include any relevant examples from your own experience or knowledge.

B) Some believe that new science related to criminal forensics should be used to look at old cases. To what extent do you agree or disagree? Give reasons for your answer and include any relevant examples from your own experience or knowledge.



THIS IS THE END OF THE TEST.

جهت مشاهده نتیجه آزمون تصویر زیر را با دوربین گوشی خود اسکن نمایید. نتیجه آزمون حداکثر تا 72 ساعت پس برگزاری اعلام می شود.



اگر این پاسخنامه متعلق به شما نیست مسئول جلسه را آگاه سازید. کلیه اسامی در این پاسخنامه به صورت کلیت قرار داده شده است. پاسخ سوالات باید با علامت مشخصه درج شود

A	B	C	D
۱۰			
۱۱			
۱۲			
۱۳			
۱۴			
۱۵			
۱۶			
۱۷			
۱۸			
۱۹			
۲۰			
۲۱			
۲۲			
۲۳			
۲۴			
۲۵			
۲۶			
۲۷			
۲۸			
۲۹			
۳۰			

A	B	C	D
۱۰			
۱۱			
۱۲			
۱۳			
۱۴			
۱۵			
۱۶			
۱۷			
۱۸			
۱۹			
۲۰			
۲۱			
۲۲			
۲۳			
۲۴			
۲۵			
۲۶			
۲۷			
۲۸			
۲۹			
۳۰			

A	B	C	D
۱۰			
۱۱			
۱۲			
۱۳			
۱۴			
۱۵			
۱۶			
۱۷			
۱۸			
۱۹			
۲۰			
۲۱			
۲۲			
۲۳			
۲۴			
۲۵			
۲۶			
۲۷			
۲۸			
۲۹			
۳۰			